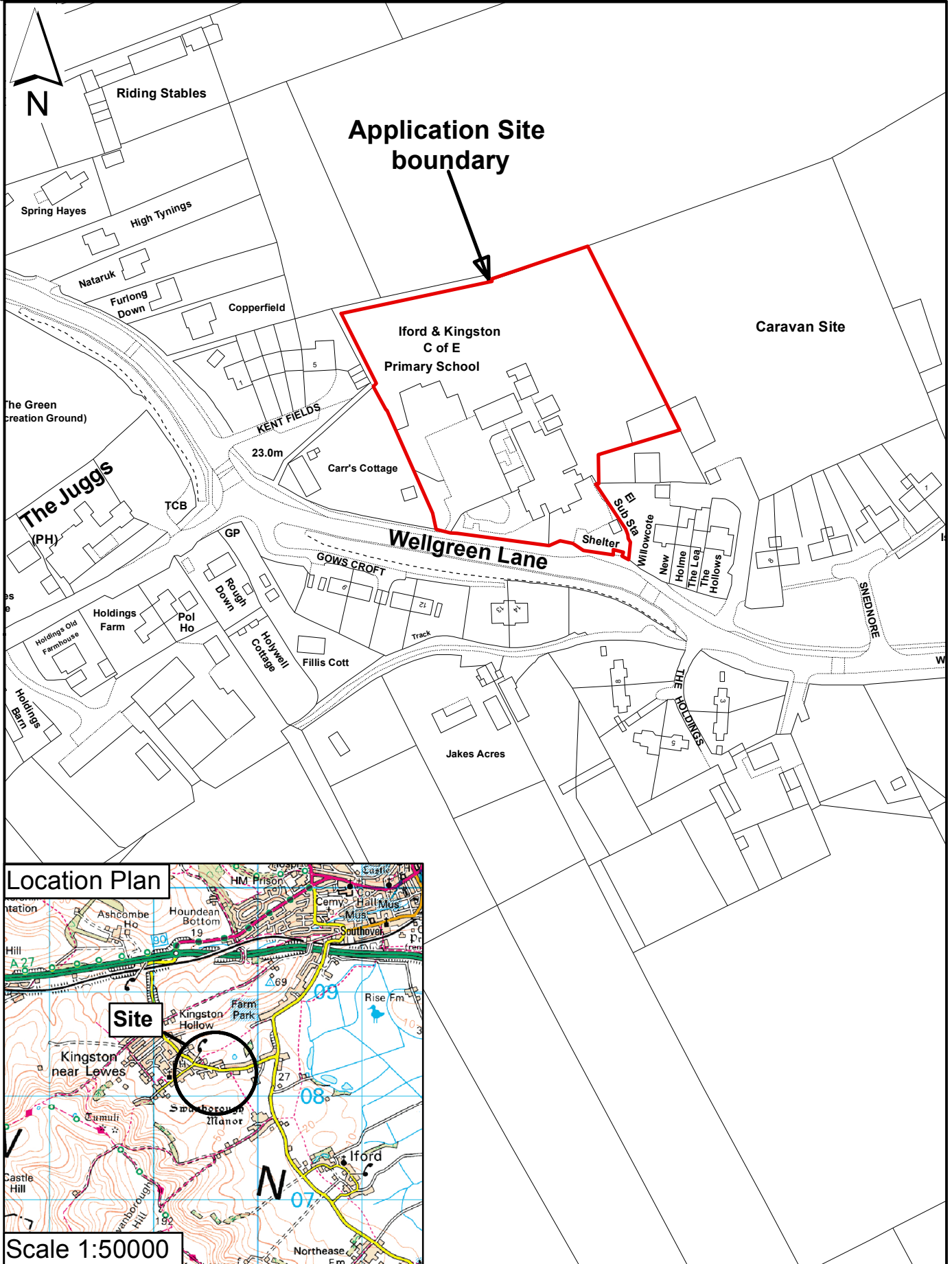


SDNP/15/06077/RE3

Iford & Kingston C of E Primary School, Wellgreen Lane, Kingston



Location Plan

Scale 1:50000

Scale 1:2000

Rupert Clubb BEng (Hons) CEng MICE
Director of Communities,
Economy and Transport
East Sussex County Council

Reproduced from the Ordnance Survey mapping with the permission of the Controller of Her Majesty's Stationery Office © Crown Copyright. Unauthorised reproduction infringes Crown copyright and may lead to prosecution or civil proceedings. East Sussex County Council, 100019601, 2015